

μ Line 10

Laser-Interferometer Starter Package



Content of the Starter Package for Machine Alignment

*μ*Line 10



μLine – Laser LH2 (BT 840205)

- Two frequency Interferometer with highest accuracy.
- Integrated Compensation unit
- Integrated Beam alignment
- Integrated Alignment caps
- Integrated Angular adjustments
- Magnetic base
- Integrated Bluetooth



IL1 Interferometer Element (BT 840270)

- External Interferometer Element
- Integrated 90° beam
- Integrated Spirit level
- Integrated Alignment caps
- Standard 8mm stud

RL1 Reflector element (BT 840280)

- Integrated Alignment caps
- Standard 8mm stud



2 x UM1 Magnetic mounting (BT 840260)

- Magnetic mounting with adjustable arm for the optical elements



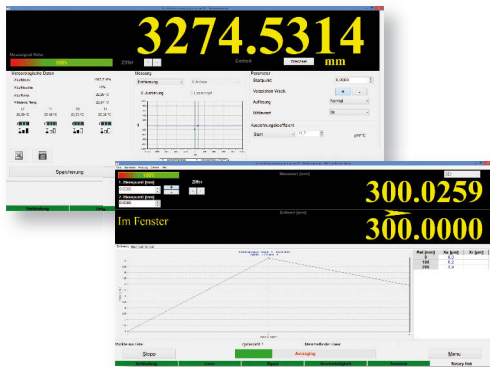
T1 Material temperature sensor (BT 840290)

- Precise, calibrated surface temperature sensor
- Wireless

TH Environment sensor (BT 840295)

Precise calibrated sensor for:

- Air pressure
- Air humidity
- Air temperature
- Wireless



PC Software base (SW 840200)

Content of the basic software:

- Beam alignment
- Position measurement
- G-Codes
- Compensation table for Siemens, Heidenhain etc.



Power supply
(BT 840220)



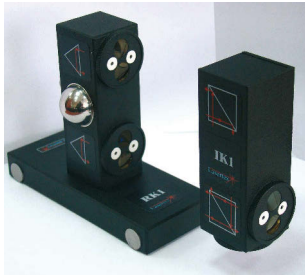
USB cable
(BT 840300)



Case (BT 840320)

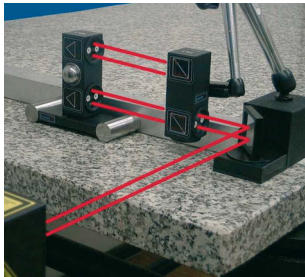
- Rugged transport and store case

Also for the μ Line available: many extension kits for rotary table, roll and nick, straightness, flatness or right angle measurement. Please contact us for more information.



**Optional Extension kit for Roll and Nick measurement
Autocollimation type straightness (BG 840210)**

Content:
1 x Angle Interferometer Prism IK1
1 x Angle unit with Retro Reflector RK1, base length 100 mm



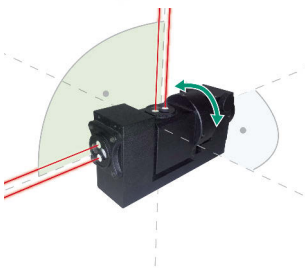
**Optional Extension kit
for Flatness Measurement for surfaces up to 15 x 15 m (BG 840270)**

Content:
1 x Tilted Mirror BB2



Rotary kit for the precise measurement of turn tables (BG 840240)
The indexer allows a precise measurement and compensation of turn tables.
The measurement requires the BG 840210.

Content:
1 x Rotary indexer
1 x BT Module
1 x Rugged case



Extension kit for angular measurements (BG 840260)
3D Etalon for the measurement of 90° with the mentioned 3D precision.

μ Line is a co-operation project between the University Wrocław (Breslau), Lasertex Co. Ltd. and Status Pro Maschinenmesstechnik GmbH.



Status Pro Maschinenmesstechnik GmbH
Mausegatt 19
D-44866 Bochum
Phone: + 49 (0) 2327 - 9881 - 0
Fax: + 49 (0) 2327 - 9881 - 81
www.statuspro.com
info@statuspro.com

PC 1090E 04/14 · Design / DTP: Seichter & Steffens Grafikdesign, D-44229 Dortmund.
Copyright 2014 Status Pro Maschinenmesstechnik GmbH.
This document or parts thereof may not be copied or otherwise reproduced without the permission of Status Pro GmbH.
The technical details are subject to change without notification.

We would appreciate being informed of any errors in this document.

Distributor