

μ Line 20

Laser-Interferometer Professional Package



Content of the Professional Package for Machine Alignment

*μ*Line 20



μLine – Laser LH2 (BT 840205)

- Two frequency Interferometer with highest accuracy.
- Integrated Compensation unit
- Integrated Beam alignment
- Integrated Alignment caps
- Integrated Angular adjustments
- Magnetic base
- Integrated Bluetooth

Laserkopf Upgrade 3D (BT 840410)

Upgrade for 3D measurements

IL1 Interferometer Element (BT 840270)

- External Interferometer Element
- Integrated 90° beam
- Integrated Spirit level
- Integrated Alignment caps
- Standard 8mm stud

RL1 Reflector element (BT 840280)

- Integrated Alignment caps
- Standard 8mm stud

2 x UM1 Magnetic mounting (BT 840260)

- Magnetic mounting with adjustable arm for the optical elements

2 x HB1 Adapter (BT 840405)

- Mounting of the optical elements on SR1 or SR2

SR1-50 Rod (BT 840395)

- 50 mm Rod for use on the magnet of UM1

SR1-100 Rod (BT 840400)

- 100 mm Rod for use on the magnet of UM1



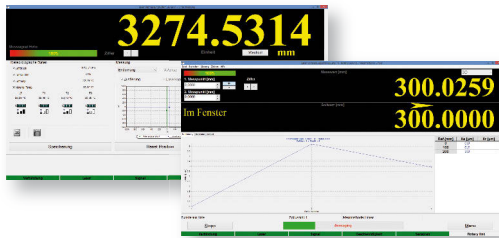
T1, T2, T3 Material temperature sensor (BT 840290)

- Precise, calibrated surface temperature sensor
- Wireless

TH Environment sensor (BT 840295)

Precise calibrated sensor for:

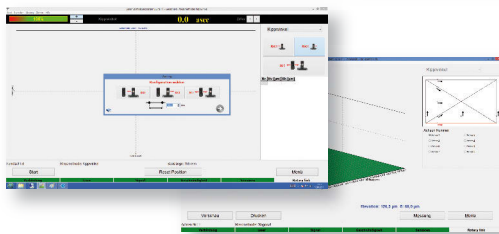
- Air pressure
- Air humidity
- Air temperature
- Wireless



PC Software base (SW 840200)

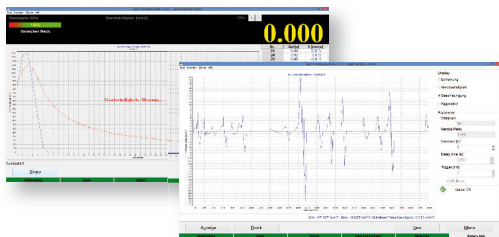
Content of the basic software:

- Beam alignment
- Position measurement
- G-Codes
- Compensation table for Siemens, Heidenhain etc.



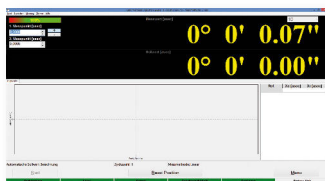
PC Software module 1 (SW 840201)

- Straightness*
- Flatness*



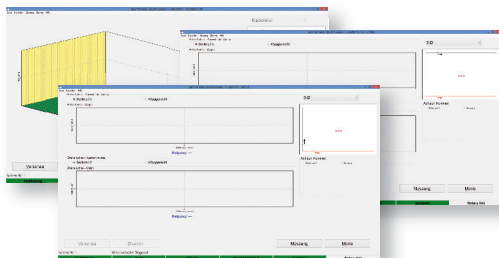
PC Software module 2 (SW 840202)

- Dynamic measurements



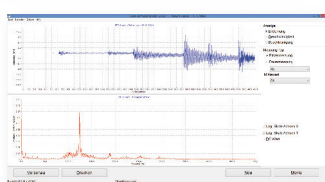
PC Software module 3 (SW 840203)

- Rotary measurements (turn table)*



PC Software module 4 (SW 840204)

- Flatness*
- Parallelism*
- Rectangularity*



PC Software module 5 (SW 840205)

- Vibration measurements*

* For some application you need additional components.



Power supply
(BT 840220)



USB cable
(BT 840300)



Manual Starter with cable STROBE (BT 840310)



Case (BT 840320)

- Rugged transport and store case

Tripod (BG 840231)

- Complete with alignment head



***μ*Line** is a co-operation project between the University Wrocław
(Breslau), Lasertex Co. Ltd. and Status Pro Maschinenmesstechnik GmbH.



Status Pro Maschinenmesstechnik GmbH
Mausegatt 19
D-44866 Bochum
Phone: + 49 (0) 2327 - 9881 - 0
Fax: + 49 (0) 2327 - 9881 - 81
www.statuspro.com
info@statuspro.com

PC 1091E 04/14 · Design / DTP: Seichter & Steffens Grafikdesign, D-44229 Dortmund.
Copyright 2014 Status Pro Maschinenmesstechnik GmbH.
This document or parts thereof may not be copied or otherwise reproduced without the
permission of Status Pro GmbH.
The technical details are subject to change without notification.

We would appreciate
being informed of any
errors in this document.

Distributor